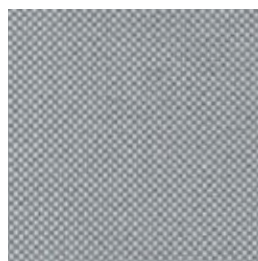
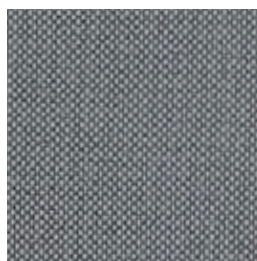


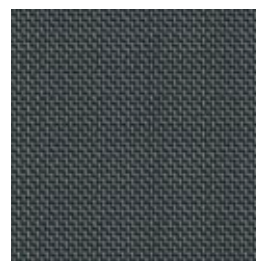
A 40 arctic



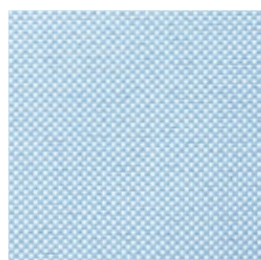
A 41 cloud



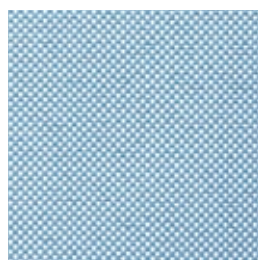
A 42 graphite



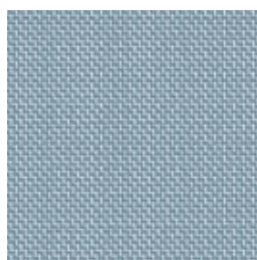
A 424 onyx



A 43 ice blue



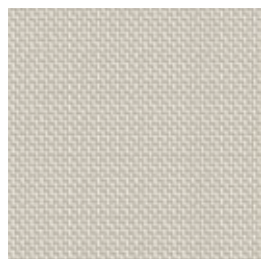
A 44 pacific



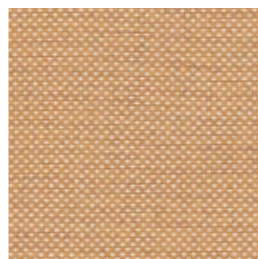
A 444 river



A 45 deep sea



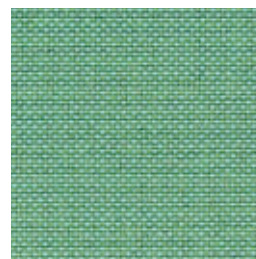
A 459 champagne



A 47 wheat



A 48 indian



A 46 jade

Stoffgruppe · Fabric · Tissu · Tessuto



LINIO

2012

Die Größe der abgebildeten Stoffstrukturen entspricht nicht immer dem Originalstoff. Farbabweichungen sind aus drucktechnischen Gründen möglich.

The size of the materials structure shown does not always correspond to the original material.

Due to the limitations of the printing process the materials and colours shown are not always a true copy of the original.

La dimension des structures de matériau représentées ne correspond pas toujours au matériau d'origine.

Pour des raisons techniques d'impression, des variations de teintes sont possibles.

Technische Beschreibung

Materialzusammensetzung	100 % Polyester Trevira CS
Gewicht	ca. 400 g/lfm.
Breite	170 cm
Brandschutz	DIN 4102 B1, entspricht den Normen in Deutschland
Scheuerfestigkeit	20.000 Touren nach Martindale
Lichtechtheit	5 - 6
Reinigung	Mit einem feuchten Tuch abwischen.

Technical Specifications

Composition	100 % Polyester Trevira CS
Weight	Approx. 400 g/lfm.
Width	170 cm
Flammability	DIN 4102 B1
Abrasion resistance	20.000 rubs according to Martindale
Colourfastness to light	5 - 6
Maintenance	Wipe clean with a damp cloth.

Description technique

Composition	100 % Polyester Trevira CS
Poids	ca. 400 g/lfm.
Largeur	170 cm
Classement feu	M1
Résistance à l'usure	20.000 mouvements selon Martindale
Solidité à la lumière	5 - 6
Nettoyage	Essuyez avec une étoffe humide.

Descrizione Technica

Composizione	100 % Poliestere Trevira CS
Peso	ca. 400 g/lfm.
Altezza	170 cm
Resistenza al fuoco	M1-DIN 4102 B1
Resistenza all'abrasione	oltre 20.000 "sfregamenti" secondo Martindale
Resistenza del colore alla luce	5 - 6
Manutenzione	Pulire con panno umido.

