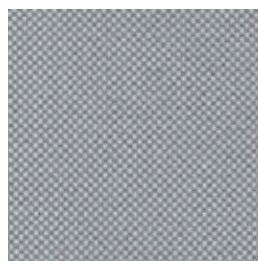
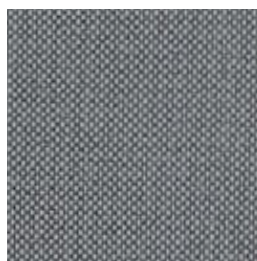


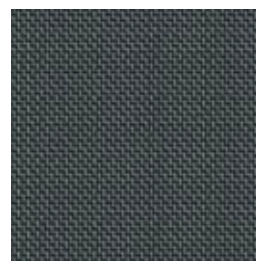
A 40 arctic



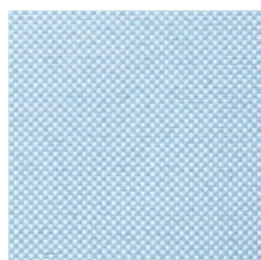
A 41 cloud



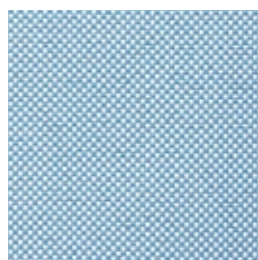
A 42 graphite



A 424 onyx



A 43 ice blue



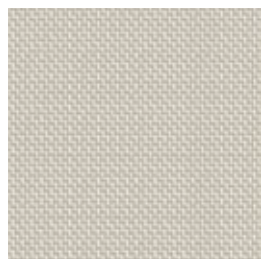
A 44 pacific



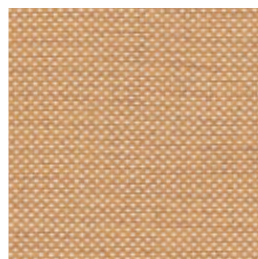
A 444 river



A 45 deep sea



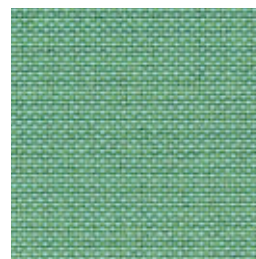
A 459 champagne



A 47 wheat



A 48 indian



A 46 jade

Stoffgruppe · Fabric · Tissu · Tessuto



2012

LINIO

Die Größe der abgebildeten Stoffstrukturen entspricht nicht immer dem Originalstoff. Farbabweichungen sind aus druck-technischen Gründen möglich.

*The size of the materials structure shown does not always correspond to the original material.*

*Due to the limitations of the printing process the materials and colours shown are not always a true copy of the original.*

La dimension des structures de matériau représentées ne correspond pas toujours au matériau d'origine.

Pour des raisons techniques d'impression, des variations de teintes sont possibles.

**Technische Beschreibung**

Materialzusammensetzung	100 % Polyester Trevira CS
Gewicht	ca. 400 g/lfm.
Breite	170 cm
Brandschutz	DIN 4102 B1, entspricht den Normen in Deutschland
Scheuerfestigkeit	20.000 Touren nach Martindale
Lichtechtheit	5 - 6
Reinigung	Mit einem feuchten Tuch abwischen.

**Technical Specifications**

Composition	100 % Polyester Trevira CS
Weight	Approx. 400 g/lfm.
Width	170 cm
Flammability	DIN 4102 B1
Abrasion resistance	20.000 rubs according to Martindale
Colourfastness to light	5 - 6
Maintenance	Wipe clean with a damp cloth.

**Description technique**

Composition	100 % Polyester Trevira CS
Poids	ca. 400 g/lfm.
Largeur	170 cm
Classement feu	M1
Résistance à l'usure	20.000 mouvements selon Martindale
Solidité à la lumière	5 - 6
Nettoyage	Essuyez avec une étoffe humide.

**Descrizione Technica**

Composizione	100 % Poliestere Trevira CS
Peso	ca. 400 g/lfm.
Altezza	170 cm
Resistenza al fuoco	M1-DIN 4102 B1
Resistenza all'abrasione	oltre 20.000 "sfregamenti" secondo Martindale
Resistenza del colore alla luce	5 - 6
Manutenzione	Pulire con panno umido.



PREFORM GmbH  
 Esbacher Weg 15  
 D-91555 Feuchtwangen  
 Tel.: + 49 98 52 9070  
 Fax: + 49 98 52 907-77  
 info@preform.de  
 www.preform.de